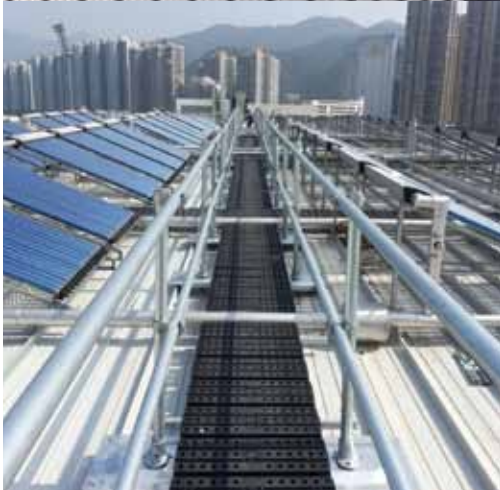




SAFETY AT THE HIGHEST LEVEL

# The Safety Solution for Roof Top Walkways



- CLEAR ON-ROOF DEMARCATION TO PREVENT ROOF SURFACES BEING DAMAGED
- FLEXIBLE, MODULAR SYSTEM ADAPTABLE TO CHANGING ROOF LEVELS
- COMPLIANT WITH THE TEST REQUIREMENTS OF EN 516 CLASS 1-C
- SUPPLIED IN 3M AND 1.5M STANDARD MODULES

# The Safety Solution for Roof Top Walkways

**KEE WALK** provides a safe, anti-slip, level walking surface for anyone who needs to access a roof in the course of their work. It provides a clear demarcation route which protects the roof from unnecessary damage and uniformly distributes the pedestrian load across its surface.

The product caters for flat, barrel and sloping roofs, with steps and a traverse option allowing access to be created for virtually any roof configuration from 0 to 35 degrees.

**KEE WALK** is a modular system complying with the test requirements of EN 516:2006 (Prefabricated Accessories for Roofing – Installations for roof access – Walkways, treads and steps).

Easy assembly utilising standard components removes the need to have parts specifically manufactured off-site, making installation and specification quick and simple.

**KEE WALK** is designed for modern roof types including trapezoidal profile composite or built up and standing seam metal roofs.



## Features

- Provide a safe, level walkway across a roof surface
- Compliant with the test requirements of EN 516 Class 1-C (Prefabricated Accessories for Roofing – Installations for roof access – Walkways, treads and steps) and assists compliance with the Work at Heights regulations
- 1.5m & 3m pre-assembled lengths supplied as standard from stock
- Designed for use on composite, trapezoidal metal profile and standing seam roofs
- Flexible, modular system adaptable to changing roof angles from 0 to 35 degrees; fully adjustable on-site
- Contrasts with roof surface to provide a clear demarcation route
- Nylon treads with enhanced slip resistance for adverse weather conditions
- Lightweight aluminium bearer bars for all roof types
- Minimal selection of brackets required to install a complete system
- Fixings do not damage the integrity of the roof surface
- No bespoke parts required
- Fire Rated to Class HB of UL94 (harmonised with ISO 9772)
- Open tread ensures water drains away easily.

## Benefits

- Standard parts available from stock
- Ease of installation
- Slip resistance compliant to British Standard BS 4592
- Flexible, modular system adaptable to changing roof levels
- Rigid, solid construction ensures **KEE WALK** is secure under foot
- Treads and bearer bars are recyclable
- Clear on-roof demarcation to prevent roof surface being damaged

## Company Information

- Kee Safety can provide technical advice and support for any walkway requirements.
- Also available from Kee Safety is KEE LINE a horizontal safety line for use with KEE WALK on all suitable roof types, a full range of Personal Protection Equipment (PPE) such as harnesses and lanyards PPE Work wear including safety helmets, knee pads and work boots. For full details on these products visit [www.keesafety.com/uk](http://www.keesafety.com/uk).

# The Kee® Walk System

**KEE WALK** provides a flexible, easy to assemble walkway system designed for use on most modern roof types. To demonstrate the flexibility of the system, a brief explanation of the key constituent parts; the longitudinal configuration, the configuration to traverse a roof, the step configuration and the treads is given below. The anti-slip characteristics of the walkway are essential for user safety. The British Standard (BS 4592) requires a minimum co-efficient of 0.4 as a measure of the friction and **KEE WALK** achieves almost double this in both wet and dry conditions. Specific fixing packs are supplied for the different roof types.



**KEE WALK 3m section**

## Longitudinal 3m Configuration

Supplied pre-assembled by Kee Safety to facilitate rapid on-site installation and thus minimise installation costs, these standard lengths have 12 treads per 3m. Weighing only 24kg, the standard lengths are easily positioned and aligned. They are joined together by a simple 100mm long straight connector which attaches to the bearer bars.



**KEE WALK Traverse Walkway**

## Traverse Configuration

**KEE WALK** is designed to make the task of building a walkway across a sloping roof a straight forward installation, again using a standard set of components. A traverse section of walkway uses a standard **KEE WALK** section for the level walking surface which is mounted onto a sub-frame fixed to the roof. The two sections are joined with hinged brackets at the rear of the assembly and use the rotating arms at the front to level the walking surface, as depicted on the adjacent photograph.



**Traverse Support Plate**



**Custom Hinge**

# The Kee® Walk System

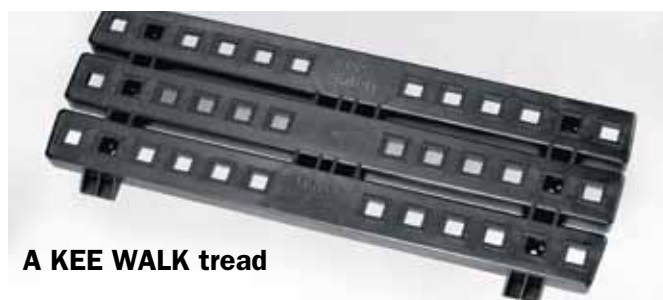


**Rotating Arms**

Kee Safety provides pre-assembled step configurations in 3m or 1.5m lengths which require only minor adjustment on-site. The rotating arms (shown above) allow the installer to set the angle of the steps simply by removing the locating bolt, setting the horizontal angle and then replacing the bolt. The steps configurations will change depending on the pitch of the roof. Standard components are available for 5° - 10°, 10° - 15°, 15° - 25°, 25° - 35°, all which comply with the requirements of EN 516. Kee Safety can provide specific information on all the different step configurations as required.



**KEE WALK steps**



**A KEE WALK tread**

Manufactured in high grade nylon incorporating raised roughened sections, the treads are developed to comply with EN 516 (Prefabricated Accessories for Roofing – Installations for roof access – Walkways, treads and steps), exceeding the deflection criteria and slip resistance requirements of the standard.

The treads, when supplied separately to build steps or walkway sections less than the standard 1.5 or 3m pre-assembled sections, are quickly secured onto the aluminium bearer bars using two self drilling screws, fixed in the centre holes. Additional fixing holes are provided either side of the centre hole. Their design incorporates spacers to ensure simple, correct spacing and alignment. Treads can be cut down if required to fit between fixed points.

Each tread is 625mm long, 225mm wide and 35mm deep.

## Test Requirements - EN 516-2006

- **EN 516 (Prefabricated Accessories for Roofing Installations for roof access – Walkways, treads and steps) Test Requirements**
- **Deflection Criteria on Walkways & Steps** - 1.5 KN concentrated load applied over an area of 100mm x 100mm. The deflection under load must not exceed 15mm or 1/100 of the span, whichever is the lesser.
- **Residual Deformation on Walkways & Steps** - 2.6 KN concentrated load applied over an area of 100mm x 100mm at the front edge of the tread applied for 1 minute. The residual deformation after the load is removed should not exceed 5mm.

These criteria have been surpassed in all testing. The raised surfaces on the tread have a slightly coarse finish to enhance the slip resistance.



Kee Safety LLC  
Dubai Investment Park (DIP)  
Near Green Community  
PO Box 18448  
Dubai, UAE

Tel: (+971) 4 8859066  
Fax: (+971) 4 8859065

Email: [indiasales@keesafety.com](mailto:indiasales@keesafety.com)  
[www.keesafety.in](http://www.keesafety.in)